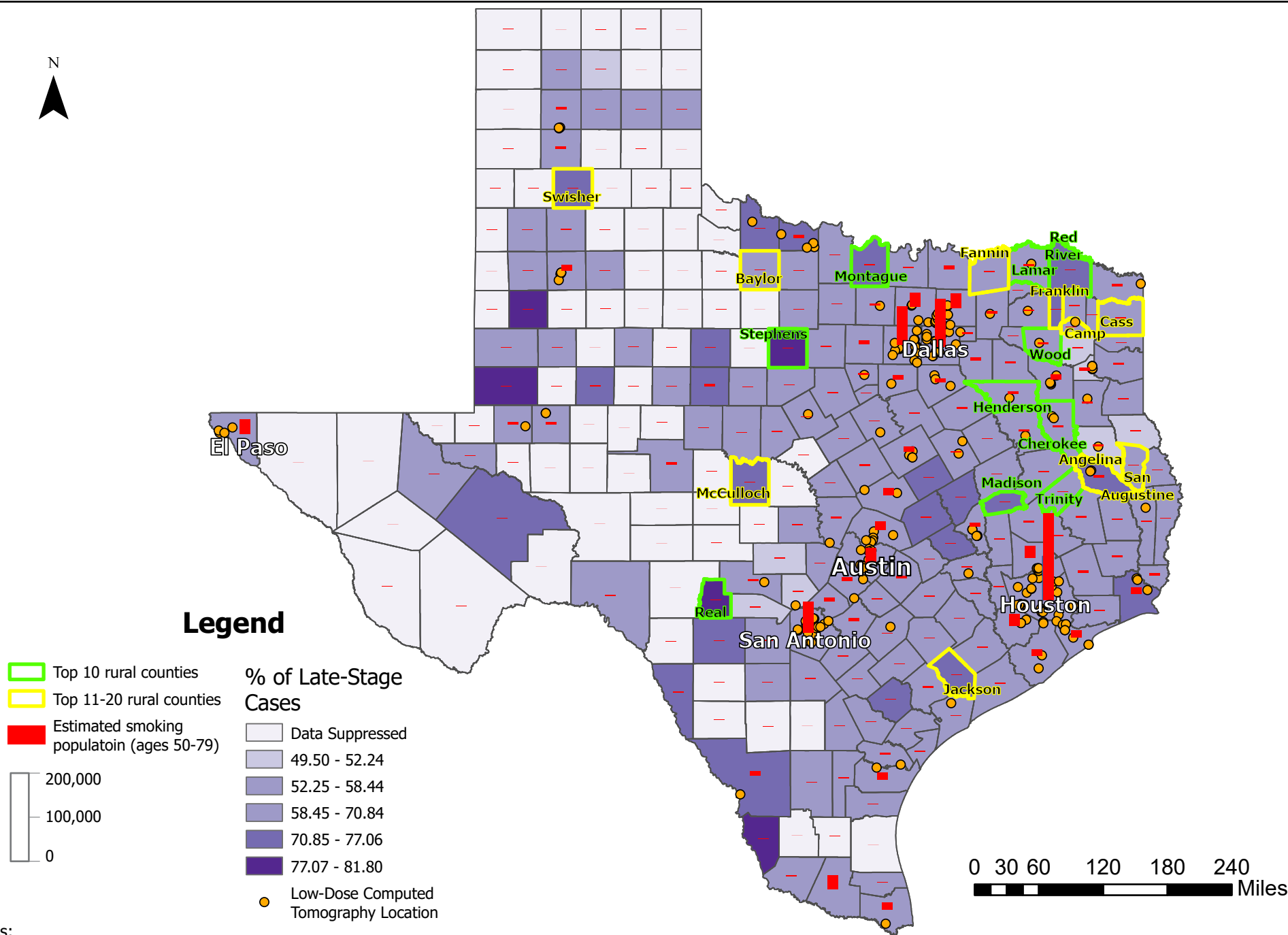


Top 20 Rural Counties in Texas with Highest Combined Lung Cancer Priority Score



Notes:

- 1) Estimated smoking population are based on the county level smoking rates in 2022 and estimated 2023 county population counts in that age group from the US Census.
- 2) Each county was first assigned a rank score based on each of the three rates: late-stage rates, incidence rates, and mortality rates. (For each rate, a higher rate received a higher rank score. If multiple counties had the same rate, they were assigned the same rank.) Then each county was assigned a combined rank score based on the addition of the three rank scores.
- 3) All counties then were ranked from the highest risk to lowest risk based on the combined rank scores.